

Cabinet Lead Report –

Councillor David Guest: Cabinet Lead for Planning and the Built Environment

Development Management

Major Developments – Progress update

Goldring Close, Hayling Island

The reserved matters application for this development of 131 houses was approved at the Development Management Committee meeting held on 14 August. Work has commenced on delivering the development for Bellway Homes.

Solent Trade Park, Solent Road

Work is well under way in delivering Phase 2 of these new employment units; the first of which has recently been occupied by Halfords and more recently Screwfix.

Solent Retail Park, Solent Road

Demolition works have taken place in anticipation of the delivery of this new major new retail development, which is scheduled to commence early in the New Year.

Dunsbury Hill Farm /ASDA Roundabout, Purbrook Way/Hulbert Rd

Portsmouth City Council is understood to be considering its preferred approach to making reserved matters application. Officers anticipate further updates towards the end of the year.

Asda roundabout reconstruction works began with site preparation w/c 20 October. HBC/HCC communications officers are liaising closely re publicising traffic management to residents and businesses, and providing regular updates. Project scheduled for 60+ weeks.

Land west of Horndean Road, Emsworth

Site allocation UE13 in Emsworth is the subject of a planning application for 125 dwellings and associated surface water management proposals. This is likely to be considered by the DMC in December.

Land north of Bartons Road, Havant

Havant site allocation UE3a - together with additional land which crosses the boundary into East Hampshire District, is the subject of a planning application for 55 dwellings. Havant Borough Council is the lead authority for this application. This is likely to be considered by the DMC in December.

Land north of Portsdown Hill Road, Bedhampton

Site allocation UE5 for 46 dwellings was granted planning permission in early November.

West of Waterlooville MDA and environs

The next Joint DMC meeting with Winchester City Council is being held at the end of November, with items considering the provision of an 80 bedroom nursing home and an extra care development of 48 units.

In Waterlooville, the new Sainsburys retail store in Hambledon Road is scheduled to open on 3rd December.

Planning workloads and performance

Planning application fee income is significantly ahead of budget, reflecting the number of major proposals that have come forward for consideration this year, whilst the number of new major schemes coming forward to application stage is likely to slow towards the end of 2014.

In terms of planning application performance, this is currently exceeding the targets set for all categories of work for the 2014/15 period.

Planning Policy and Urban Design

With a full Local Plan and CIL fully implemented Planning Policy has shifted its focus to the delivery of key development opportunities in the borough. The team is working closely with Economic Development to create growth and prosperity in the borough by promoting the major development sites to private investors, the Solent Local Enterprise Partnership and PUSH. The team's focus is currently on Havant Town Centre; working on a car parking, transport, and retail trends studies, feasibility of the Havant footbridge improvement and Market Parade options. This work builds on the market momentum for investing in Havant as is clearly shown in the commercial development completions and opportunities along Solent Road.

The management of the Community Infrastructure Levy is increasingly about coordinating potential spending priorities with the infrastructure providers and the Council's aspirations. The Policy Team is taking a lead on this and ensuring all members have the opportunity to get involved.

With the adoption of the Local Plan and the state of the economy there is significant house building underway in the borough. Whilst housing completions in 2013/14 were below expectations the starts since April 2014 show a 98% increase that will bring us on track to meet the housing targets. As well as being the only Council in Hampshire with a full Local Plan and implemented CIL, we have a 5 year supply of housing which would be the envy of many planning authorities at the moment. Having a 5 year supply means that we are able to positively manage speculative planning applications to make sure new homes go to the sites the Council agreed.

National Watersports Festival & Virgin Kitesurfing Armada

The National Watersports Festival 2014 was held on 5th – 7th Sept on Hayling Island attracting over 500 participants from the UK and beyond. The event draws around 3,000 visitors to the Borough over the weekend and the council supported the event with the use of land, organisational support and advertising.

Following last year's record breaking event at Hayling Island, the 2014 Virgin Kitesurfing Festival took place on 11th and 12 Oct 2014.

Over 500 kitesurfers took part which included a successful world record attempt. HBC has provided considerable support for this major event, including use of the venue. The event provides fundraising support for three charities Snow-Camp, an innovative youth charity to support inner-city young people, Virgin Unite the independent charitable arm of Sir Richard Branson's Virgin Group, and the RNLI.

Both high profile events put the area on the national and international map and are a key component of HBC's strategy to promote the area for tourism and inward investment, providing a boost to the local economy.

Emsworth Food Fortnight National Award

In association with the Daily Telegraph, the Emsworth Food Fortnight won a National Competition as part of British Food Fortnight. This represents great news for Emsworth and HBC given the council's role in assisting in the organisation of the event. The EBA attended a presentation with the Secretary of State for the Environment, Food and Rural Affairs in London to receive the award. This national recognition helps further promote Emsworth as a visitor attraction and further supports its reputation as a destination for quality food and drink.

Coastal Management & Climate Change

Beach Management Activities 2014-2015

Due to the extensive winter storms experienced over the Winter of 2013-2014, the volumes of beach along the Hayling Southern frontage depleted through erosion. Despite the recycling campaign which occurred in February and March 2014, the volumes along the Eastoke frontage required an additional 20,000m³ of beach material in order to bring it back up to its design profile prior to the winter of 2014/15.

A beach recycling operation began on 23rd October and was completed on the 7th November, during which time approximately 18700m³ of shingle was recycled from the open beaches and Eastoke point. An additional 2000m³ of shingle was imported via land based aggregate. All beach material was placed within depleted groyne bays along the main Eastoke frontage in order to build the beach up to the suggested design profile. This Beach Management operation has been split, to take place through both Beach Recycling (the sourcing of shingle material from areas

where it naturally builds up and depositing back to areas which are naturally vulnerable to erosion), and Beach Nourishment (the external sourcing of beach material using sea dredged aggregate brought in by land or through the dredging of a navigation hazard at the approach channel to Chichester Harbour). An additional volume of 10,000m³ of shingle was sourced from the Chichester Harbour entrance channel and placed in the bays in front of Eastoke corner car park. It is anticipated that a further small recycling operation is planned for early December as losses from the groyne bays at Eastoke corner have been greater than expected. This area would therefore benefit from further shingle prior to the winter storms.

Beach Recycling:

Contract awarded to Les Searles Plant Hire and Sales Ltd

Duration: 2.5 weeks, start date 27th October 2014, end date 7th November

Contract Cost: £131,500.00

Beach Nourishment via Dredge:

Contract awarded to Boskalis Westminster Ltd

Duration: 3 days, start date 28th November, end date 1st December

Contract Cost: £70,000.00

Both these projects, Beach Recycling and Nourishment will attract 100% flood defence grant in aid including all ESCP officer time resulting in a zero revenue cost to HBC.

Broadmarsh Armoflex Sloping Revetment – Repair Works

The sloping Armoflex revetment located on the foreshore of Broadmarsh, Harts Farm Way, Havant, and provides erosion protection to the historic landfill behind. The winter storms of 2013-2014 resulted in multiple failures across the whole structure and to a similar structure located 240m to the east which also provides erosion protection to the historic landfill behind.

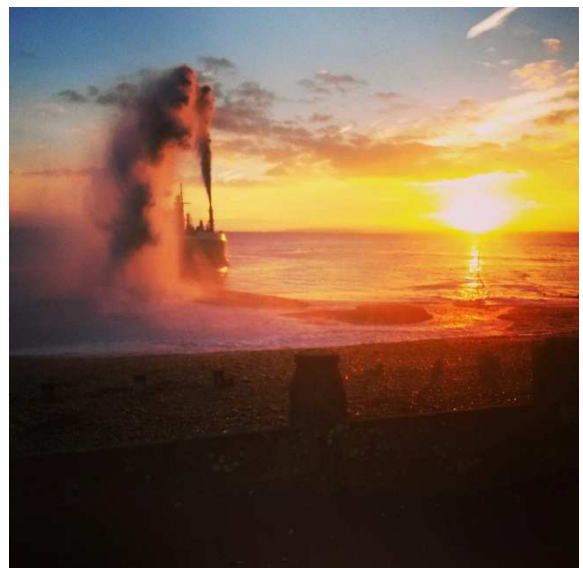




Plate 1: Structure failure.

The contract was awarded to APA Concrete Repairs Ltd

Duration of contract: 28th February – 7th October 2014

Cost of contract:

- Site 1 = £ 64,604.56
- Site 2 = £ 74,182.86

Total = £138,787.43 (£28,800.00 spent in 13-14 and remainder in 14-15). Eastern Solent Coastal Partnership (ESCP) staff are seeking opportunities for contributions towards these works but unfortunately these efforts have not been successful to date; the Team continue to seek external funds to pay for these works.

Broadmarsh Concrete Block Sloping Revetment – Repointing Works

This structure required re-pointing works in order to maintain its design life. The re-pointing works were carried out over 2 weeks in September/ October 2014.

The works were awarded to APA Concrete Repairs Ltd

Duration: 2 weeks, completed on 7th October 2014

Cost of contract: £10,900.00

Nore Barn Woods Armolock Sloping Revetment Construction

These works were constructed to provide erosion protection to the trees and footpath of Nore Barn Woods, Emsworth. These works were entirely funded through donations raised by the 'Friends of Nore Barn Woods'.

The contract was completed on time and within budget.

The works were awarded to Colas Ltd

Duration: 3 weeks, completed on 29th September 2014

Cost of contract: £42,300.00

ESCP Officer Time: £1,000.00 (paid for via donations from Friends of Nore Barn Woods)

Feedback from the 'friends' are that they are delighted with the works and pleased to be able to protect the woodland.